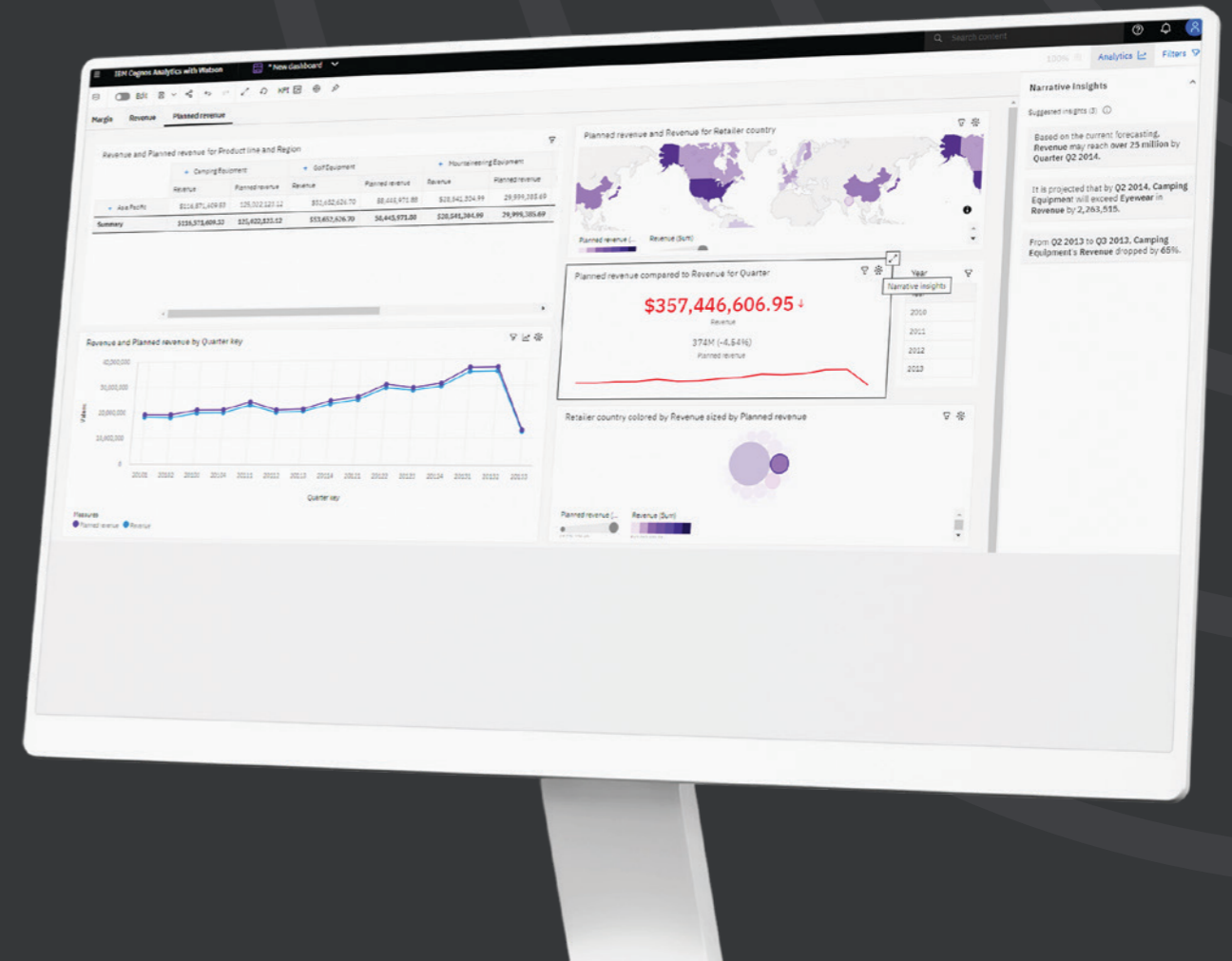


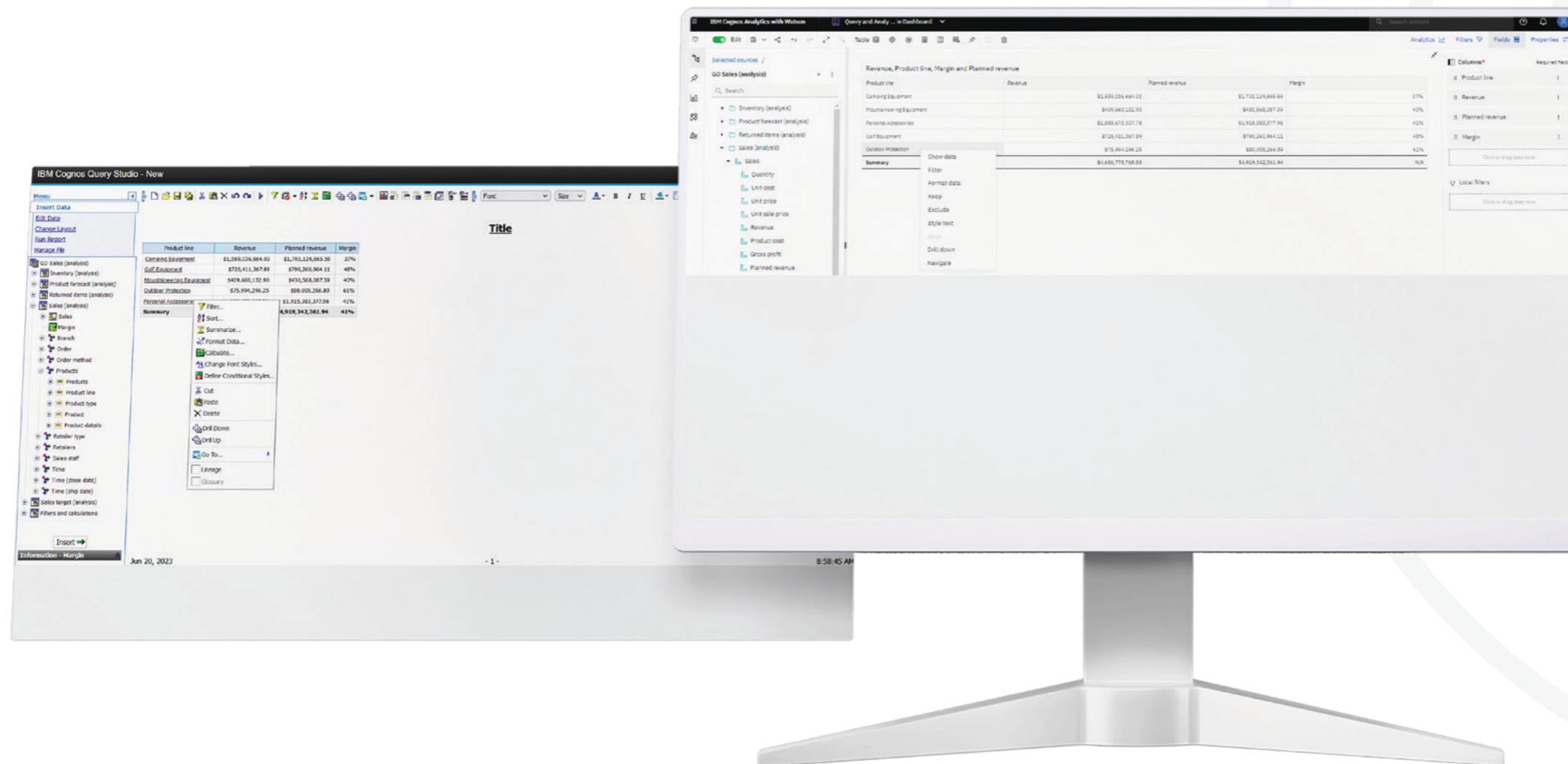


DATA TARGET



IBM Cognos Analytics: Dashboard as a replacement for Query and Analysis Studio

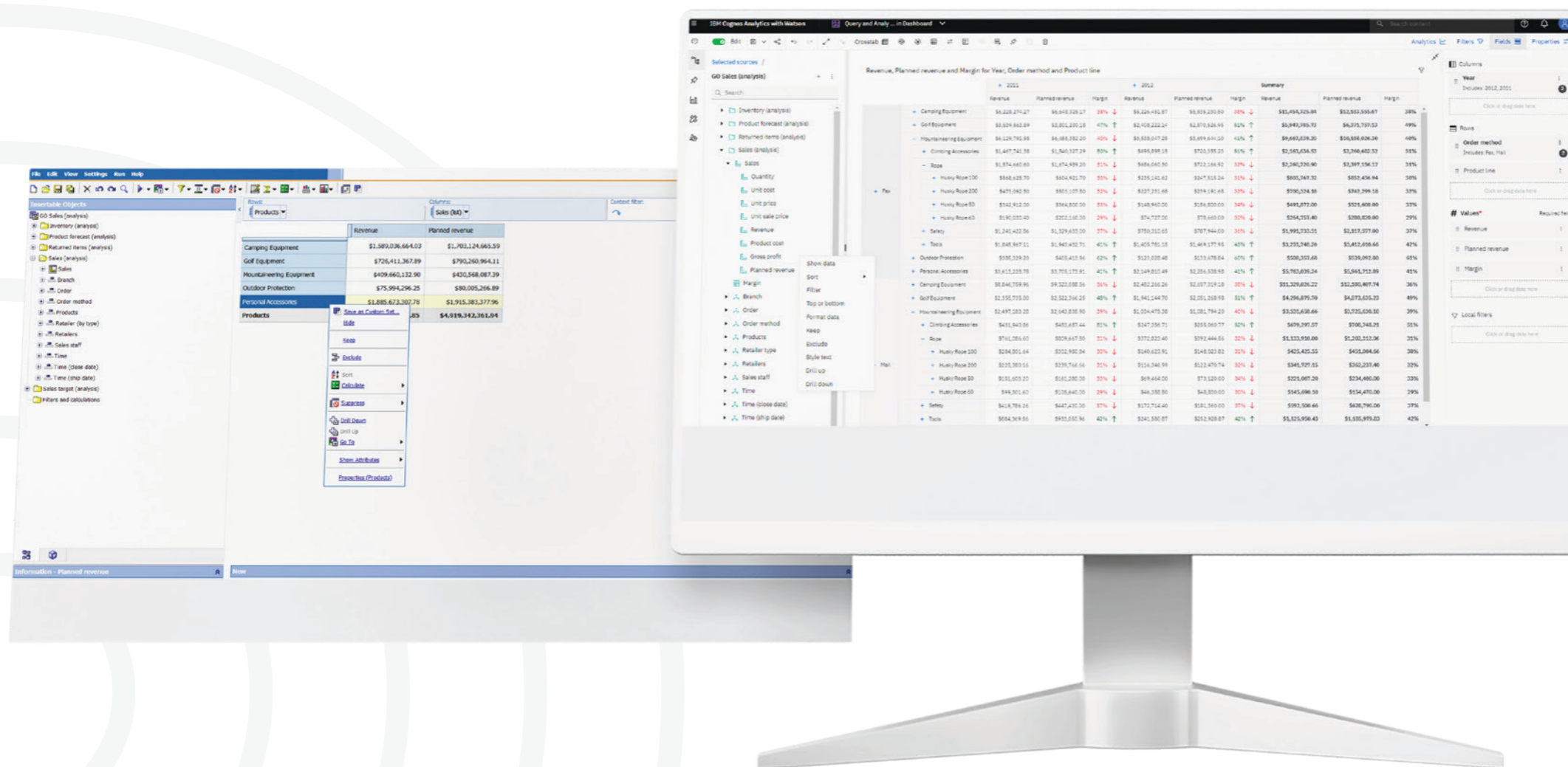




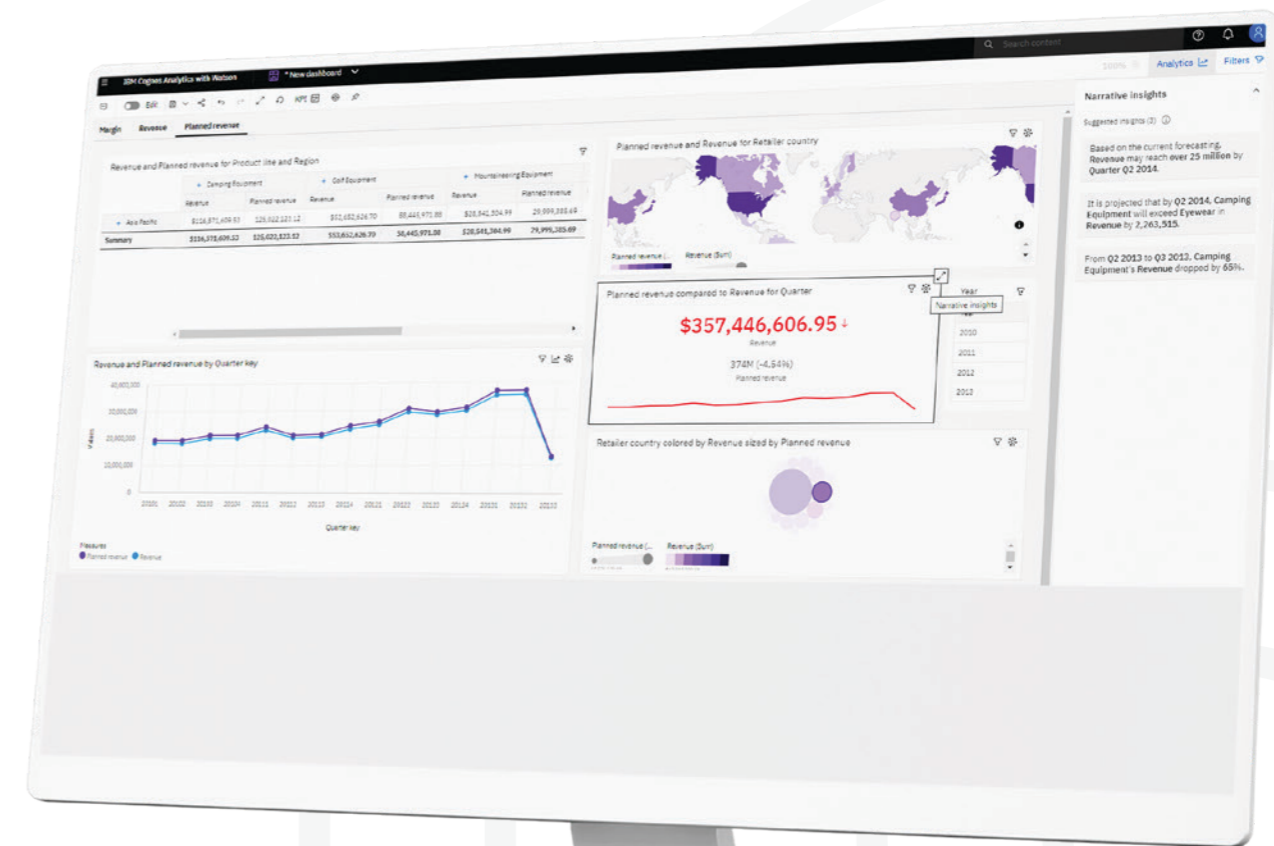
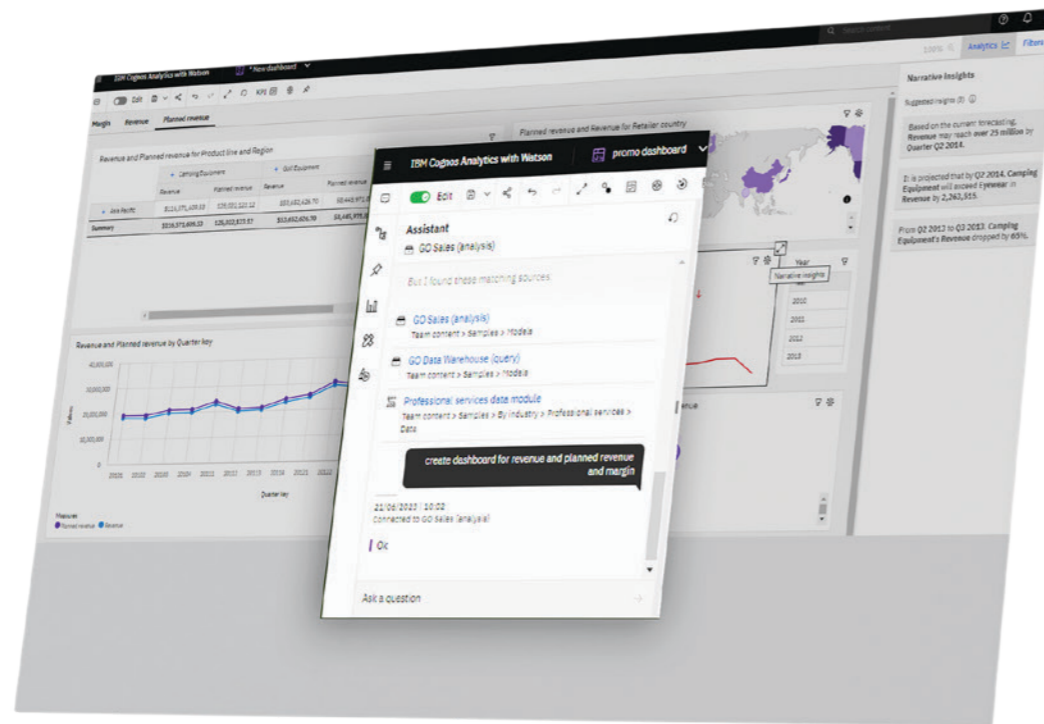
WHY WOULD WE SWITCH?

With the latest two versions of IBM's Cognos Analytics, 11.2.4 (LTS) and 12 which was released beginning of June 2023, long term Cognos users find themselves in a need of a new self-service tool to do custom analyses. Version 11.2.4 (long-term support) is the final release that includes Query Studio and Analysis Studio but limited

to specific web browsers, and starting with version 12, both of those studios will no longer be supported. Dashboard is designed as a multi-purpose self-service tool that can include the functionalities of Query Studio and Analysis Studio. Table object in Dashboard is used to simulate list like the one in Query Studio.



Dashboard is missing a few functionalities from Query Studio like Section, Rename columns, Report definition and My preferences. Crosstab object in Dashboard is used to simulate nesting functionality like the one in Analysis Studio.



Dashboard offers the same drill down functionality that was possible in Analysis Studio but enhances visual experience with everyone's favorite expand/collapse buttons – plus and minus. Additionally, Dashboard table and crosstab object allows conditional formatting and use of indicators of performance. But Dashboard is so much more!



Along with table-like visualizations Dashboard offers a lot more self-service functionalities like combining table or crosstab with charts, set cascading filters to help you focus your data or using narrative insights to see meaningful aspects of the chart's data in natural language. You can consult Assistant to help you create new tables, crosstabs and charts or even create a whole new dashboard using natural language command like 'create dashboard for ...' which can be a good starting point on your self-service journey.



DATA TARGET



For more information, contact us at info@datatarget.eu